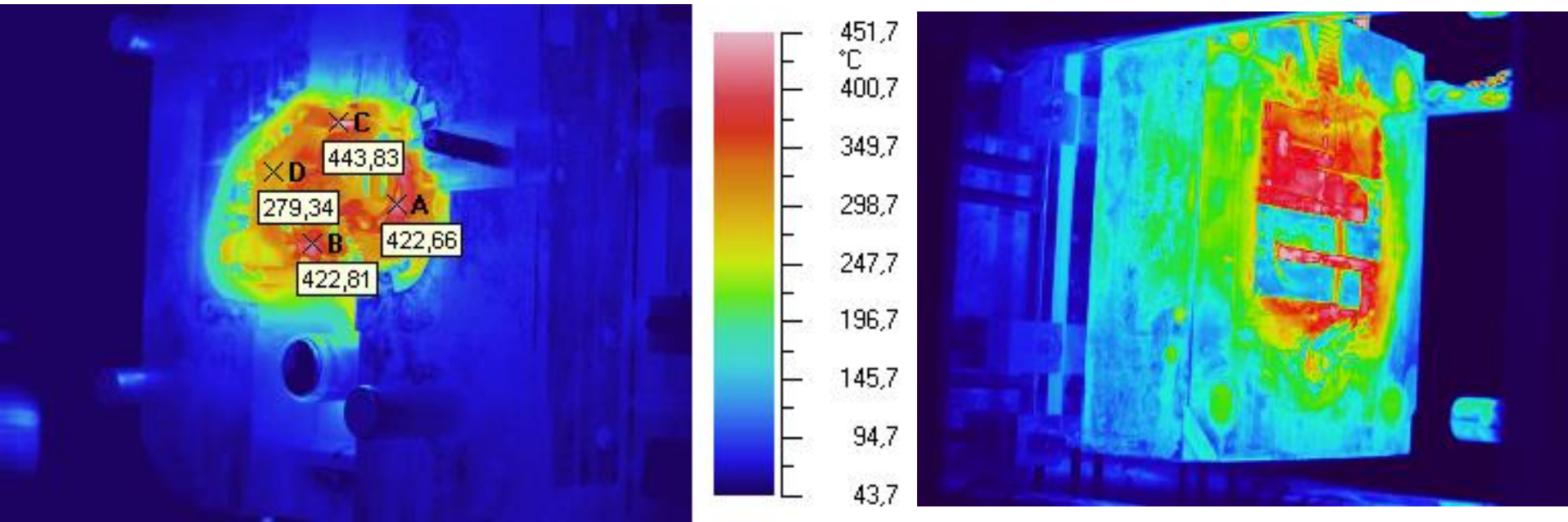


Application of IR Thermography for Automotive Related Industry

Measurement of Aluminum die cast mold surface



- Capture thermal image of Aluminum die cast before and after mold releasing agent.
- It give you variable data to set parameter.

[Merit of using thermography]

- Thermocouple imbedded in mold give you only limited point temperature.
⇒ Thermography allows you to measure all surface points as temperature distribution.

Application of IR Thermography for Automotive Related Industry

Resin Molding

Mold of resin molding is metal and mirror like, which is difficult to measure by thermography.

⇒By measuring surface temperature distribution of molding, mold temperature can be estimated which is reflected to the mold temperature for improvement.

